



Flight Plan & Site Survey

Created using **RPAS Wilco®**

Operation Name:	Sky Harbour -Open Sky field
Pilot Name:	Paul Brine
Pilot Certificate:	22685
Flight Start:	January 24, 2023 7:00 PM
Flight End:	January 24, 2023 9:00 PM
Flight Area (Latitude):	43° 39' 42.10" N (43.662)
Flight Area (Longitude):	81° 39' 42.20" W (-81.662)
Altitude - Radius:	Alt: 700 ft - Rad: 926.0 m (0.5 nm)
Airspace:	UNCONTROLLED
FIR - Contact:	CZYZ - 905-676-4509
Weather:	-1.4 Celsius - Snow, Overcast

Please ensure you received all required authorizations prior to flight.

Disclaimer

This Site Survey was created using RPAS Wilco by AIM Robotics. The flight plan contained is intended only for RPAS flights on the date/time and location specified. The user accepts all responsibility for the accuracy and completeness of the information contained.

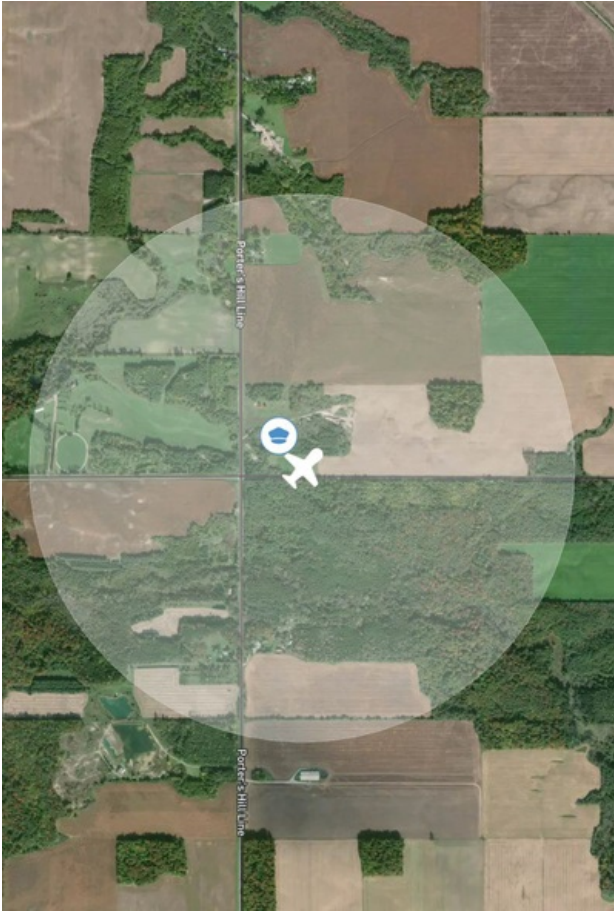
For the complete Terms & Conditions, see

<https://rpaswilco.com/#/tnc>



Included

- Site Survey
- Obstacles (if available)
- Nearby Aerodromes
- Canadian Aviation Regulations
- GFA
- Aerodrome Supplements
 - METAR & TAF (if available)
 - NOTAMS
 - CFS

Flight Map

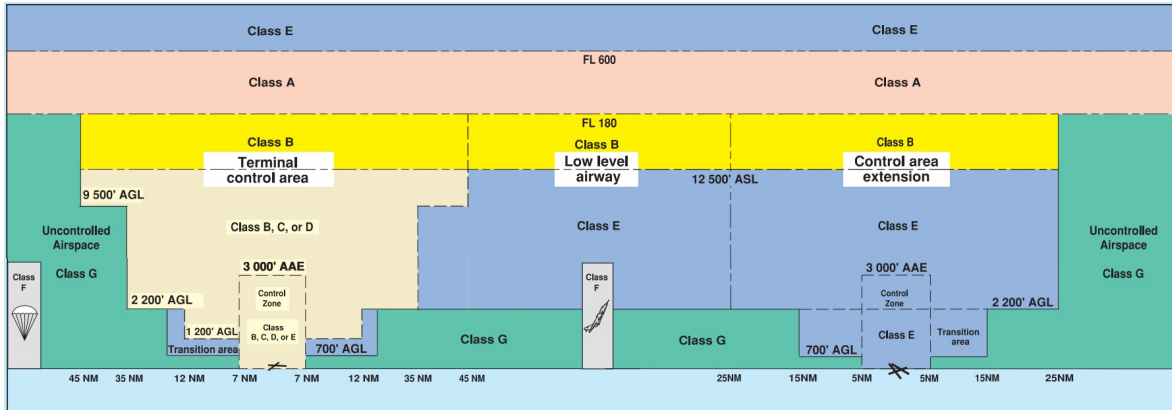


MAP Details

	Latitude	Longitude
 MODEL	43° 39' 42.10" N (43.662)	81° 39' 42.20" W (-81.662)
 Pilot Paul Brine	43° 39' 45.70" N (43.6627)	81° 39' 45.80" W (-81.6627)



Airspace Classification



Overlying Airspaces

Class	Name	Floor	Ceiling
E	Southern Ontario Low Level Control Area CAE	2500MSL	6500MSL
E	Southern Ontario Low Level Control Area CAE	6500MSL	12500MSL
B	Southern Ontario Low Level Control Area CAE	12500MSL	18000MSL
E	T616 Airway	2200AGL	12500MSL
B	T616 Airway	12500MSL	18000MSL
E	T616 Airway	2200AGL	12500MSL
B	T616 Airway	12500MSL	18000MSL
E	Southern Ontario Low Level Control Area CAE	3500MSL	12500MSL
B	Southern Ontario Low Level Control Area CAE	12500MSL	18000MSL

Nearest Aerodromes & Distance from Operation

GODERICH (CYGD - AERODROME - Reg)	Lat: 43.768	Long: -81.711	12.466 KM	6.73 NM
DUNGANNON (CDG3 - AERODROME - Reg)	Lat: 43.836	Long: -81.607	19.874 KM	10.73 NM
EXETER (CSX7 - AERODROME - Reg)	Lat: 43.377	Long: -81.504	34.116 KM	18.42 NM
BRUSSELS (ARMSTRONG FIELD) (CPD4 - AERODROME - Reg)	Lat: 43.75	Long: -81.233	35.833 KM	19.35 NM

Weather Information for Mission Day

Summary: Cloudy skies throughout the day with snow.

Condition	Temperature	Feels Like	Precipitation	Visibility	Cloud Coverage	Wind Speed	Humidity
Snow, Overcast	-1.4 Celsius	-7.5 Celsius	98.0 %	5.8 Km	90.3 %	36.0 kph	89.1 %

ONTARIO

AERODROME / FACILITY DIRECTORY

GODERICH ON

CYGD

REF	N43 46 04 W81 42 39 1.5N 9°W (2015) UTC-5(4) Elev 709' A5000 LO6 HI5 CAP	
OPR	Muni 519-524-2915 Reg	
PF	B-2 C-3,4,5,6,7	
CUST	AOE/15 888-226-7277 14-22Z† Mon-Fri exc hols	
FLT PLN		
FIG	London 866-WXBRIEF (Toll free within Canada) or 866-541-4104 (Toll free within Canada & USA)	
WX	ALTIMETER/WIND ltd hrs (see COMM)	
SERVICES	Call out chg for one or more svcs may be levied after hrs.	
FUEL	100LL, JA-1 Cardlock avbl at tml, SP PN 519-525-2383	
OIL	15W50	
S	4,5,6	
RWY DATA	Rwy 14(137°)/32(317°) 5034x100 ASPH Rwy 14 up 0.45% Rwy 10(099°)/28(279°) 3002x50 ASPH Rwy 05(048°)/23(228°) 1871x80 TURF	
RCR	519-525-2383 12-21Z† Mon-Fri, O/T ltd hrs. Rwy 05/23 no win maint.	
LIGHTING	10-(TE LO) AP 3.5°, 28-(TE LO) AP, 14-AS(TE LO) AP, 32-AS(TE LO) AP ARCAL-122.7 type J	
COMM		
ATF	UNICOM (AU) ltd hrs O/T tfc 122.7 5NM 3700 ASL	
PRO	Rgt hand circuits Rwy 05 (CAR 602.96).	
CAUTION	Possible wind shear on apch Rwy 14. Ocsl wildlife crossing rwys. Ocsl radio-controlled acft operating on Rwy 10/28.	

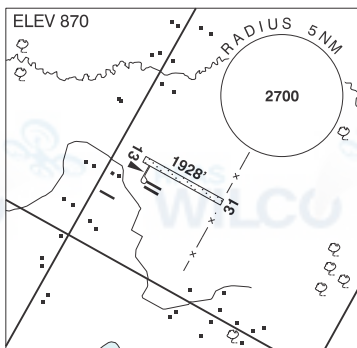
ONTARIO

AERODROME/FACILITY DIRECTORY

DUNGANNON ON

CDG3

REF	N43 50 11 W81 36 24 1S 9°W UTC-5(4) Elev 870' A5000
OPR	Mari Vanderveeken 519-263-2550 Reg
PF	B-1 D-2, 3, 4, 5, 6
FLT PLN	
FIC	London 866-WXBRIEF (Toll free within Canada) or 866-541-4104 (Toll free within Canada & USA)
RWY DATA	Rwy 13(128°)/31(308°) 1928x75 turf Rwy 13 up 1.04%
RCR	Opr No win maint
LIGHTING	13-(TE LO), 31-(TE LO) PN opr
COMM	
ATF	tfc 122.7 5NM 3900 ASL
CAUTION	Low slope ditch at end of Rwy 31



ONTARIO

AERODROME / FACILITY DIRECTORY

SEXSMITH / EXETER ON

CSX7

REF	N43 22 38 W81 30 15 1NW 9°W UTC-5(4) Elev 856' A5000	
OPR	Sexsmith Pilots Ltd 519-237-3154 or ctc David Frayne 519-235-1409 or Ross Alexander 519-670-5857 Reg	
PF	B-1 C-2,3,4,5,6	
FLT PLN		
FIC	London 866-WXBRIEF (Toll free within Canada) or 866-541-4104 (Toll free within Canada & USA)	
SERVICES		
FUEL	100LL PN	
S	4,5,6	
RWY DATA	Rwy 09/27 3100x90 turf/snow Thld rwy 09 displ 550'	
RCR	Opr Ltd win maint, soft when wet and spring thaw, call prior	
COMM		
ATF	123.2 5NM 3900 ASL	
CAUTION	Marked wires and poles thld Rwy 09. CYCE 5NM S 122.8.	

ONTARIO

AERODROME/FACILITY DIRECTORY

BRUSSELS (ARMSTRONG FIELD) ON

CPD4

REF	N43 45 W81 14 Adj E 9°W UTC-5(4) Elev 1100' A5000
OPR	W.J. Armstrong 519-887-6753 Reg
PF	B-1 C-2,4,5 D-3,6
FLT PLN	FIC London 866-WXBRIEF (Toll free within Canada) or 866-541-4104 (Toll free within Canada & USA)
RWY DATA	Rwy 04/22 2500x70 turf Rwy 17/35 1700x120 turf Thld 35 displ 200'. RCR Opr No win maint
CAUTION	Grove of aprx 75 AGL trees off Thld 22 end. Twr 345 AGL 1NM SW & 200 AGL 0.5NM NW.

